

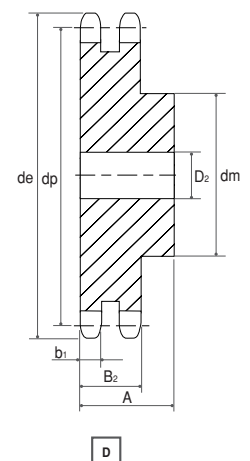
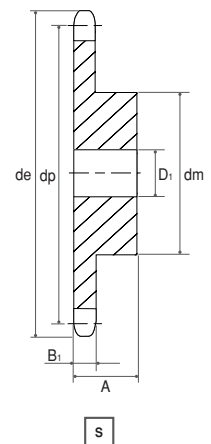
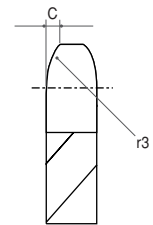
PIÑONES PARA CADENAS DE TRANSMISIÓN

Piñón 8 x 3,0 mm

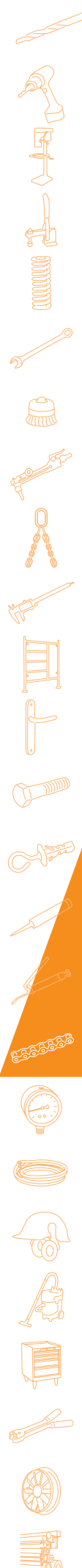
05B - 1 - 2

PIÑÓN (mm)					CADENA (mm)		
r3	C	B1	b1	B2	Paso	Ancho interno	Ø Rodillo
8 mm	0,8	2,8	2,7	8,3	8	3	5

Ref. catálogo	Z	de	dp	dm	S	D1	A	dm	D	D2	A
17050001	8	23,4	20,90	13	6	12	12	6	18		
17050002	9	25,9	23,39	15	6	12	15	6	18		
17050003	10	28,4	25,89	17	6	12	17	8	18		
17050004	11	31,0	28,39	18	7	13	19	8	18		
17050005	12	33,7	30,91	20	7	13	21	8	18		
17050006	13	36,7	33,42	23	7	13	24	8	18		
17050007	14	39,2	35,95	25	7	13	26	8	18		
17050008	15	41,7	38,48	28	7	13	29	8	18		
17050009	16	44,2	41,01	30	8	14	32	10	20		
17050010	17	46,7	43,53	30	8	14	34	10	20		
17050011	18	49,2	46,07	30	8	14	37	10	20		
17050012	19	51,7	48,61	30	8	14	39	10	20		
17050013	20	54,2	51,14	30	8	14	40	10	20		
17050014	21	57,2	53,67	35	8	14	45	12	20		
17050015	22	59,4	56,21	35	8	14	45	12	20		
17050016	23	62,2	58,75	35	8	14	45	12	20		
17050017	24	64,7	61,29	35	8	14	45	12	20		
17050018	25	67,2	63,83	35	8	14	45	12	20		
17050019	26	69,7	66,37	40	10	16	50	12	22		
17050020	27	72,3	68,91	40	10	16	50	12	22		
17050021	28	74,7	71,45	40	10	16	-	-	-		
17050022	29	77,2	73,99	40	10	16	-	-	-		
17050023	30	80,2	76,53	40	10	16	50	12	22		
17050024	31	82,7	79,08	40	12	16	-	-	-		
17050025	32	85,2	81,61	40	12	16	60	12	22		
17050026	33	87,7	84,16	40	12	16	60	12	22		
17050027	34	90,2	86,70	40	12	16	-	-	-		
17050028	35	92,7	89,24	40	12	16	60	12	22		
17050029	36	95,2	91,79	40	12	16	60	12	22		
17050030	37	97,7	94,33	40	12	16	-	-	-		
17050031	38	100,2	96,88	40	12	16	60	12	22		
17050032	39	102,7	99,42	40	12	16	-	-	-		
17050033	40	105,7	101,97	40	12	16	60	12	22		
17050034	45	118,6	114,69	60	12	20	-	-	-		
17050035	50	131,5	127,41	60	12	20	-	-	-		
17050036	57	149,3	145,22	80	14	20	-	-	-		



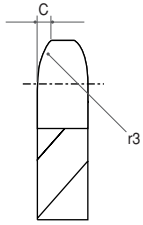
Para cadena de rodillos según DIN 8187 / Material C 45.



17/ TRANSMISIÓN

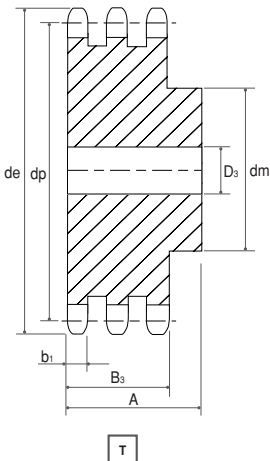
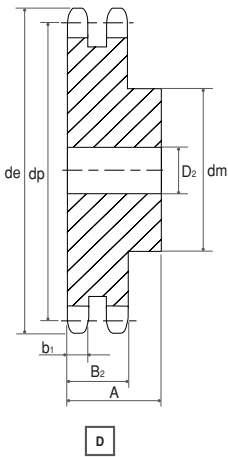
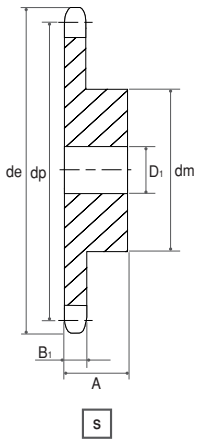
PIÑONES PARA CADENAS DE TRANSMISIÓN

Piñón 3/8" x 7/32"



9,525 x 5,72 mm / 06B - 1 - 2 - 3

r3	PIÑÓN (mm)					CADENA (mm)		
	C	B1	b1	B2	B3	Paso	Ancho interno	Ø Rodillo
10	1	5,3	5,2	15,4	25,6	9,525	5,72	6,35



Ref. catálogo	Z	de	dp	dm	S		D			T		
					D1	A	dm	D2	A	dm	D3	A
17050037	8	26,8	24,89	15	8	20	15	8	25	15	8	32
17050038	9	31,5	27,85	18	8	20	18	8	25	18	8	32
17050039	10	34,5	30,82	20	8	20	20	8	25	20	10	32
17050040	11	37,5	33,80	22	8	25	22	10	30	22	12	35
17050041	12	40,5	36,80	25	8	25	25	10	30	25	12	35
17050042	13	43,5	39,80	28	8	25	28	10	30	28	12	35
17050043	14	46,5	42,80	31	8	25	31	10	30	31	12	35
17050044	15	49,5	45,81	34	8	25	34	10	30	34	12	35
17050045	16	52,5	48,82	37	10	28	37	12	30	37	12	35
17050046	17	55,5	51,83	40	10	28	40	12	30	40	12	35
17050047	18	58,6	54,85	43	10	28	43	12	30	43	12	35
17050048	19	61,6	57,87	45	10	28	46	12	30	46	12	35
17050049	20	64,6	60,89	46	10	28	49	12	30	49	12	35
17050050	21	67,6	63,91	48	12	28	52	16	30	52	16	40
17050051	22	70,6	66,93	50	12	28	55	16	30	55	16	40
17050052	23	73,7	66,95	52	12	28	58	16	30	58	16	40
17050053	24	76,7	72,97	54	12	28	61	16	30	61	16	40
17050054	25	79,7	76,00	57	12	28	64	16	30	64	16	40
17050055	26	82,7	79,02	60	12	28	67	16	30	67	16	40
17050056	27	85,7	82,04	60	12	28	70	16	30	70	16	40
17050057	28	88,8	85,07	60	12	28	73	16	30	73	16	40
17050058	29	91,8	88,09	60	12	28	76	16	30	76	16	40
17050059	30	94,8	91,12	60	12	30	79	16	30	79	16	40
17050060	31	97,9	94,15	65	14	30	80	16	30	80	16	40
17050061	32	100,9	97,17	65	14	30	80	16	30	80	16	40
17050062	33	103,9	100,20	65	14	30	80	16	30	80	16	40
17050063	34	106,9	103,23	65	14	30	80	16	30	85	16	40
17050064	35	110,0	106,26	65	14	30	80	16	30	85	16	40
17050065	36	113,0	109,29	70	16	30	90	16	30	90	16	40
17050066	37	116,0	112,32	70	16	30	90	16	30	90	16	40
17050067	38	119,0	115,34	70	16	30	90	16	30	90	16	40
17050068	39	122,1	118,37	70	16	30	90	16	30	90	16	40
17050069	40	125,1	121,40	70	16	30	90	16	30	90	16	40
17050070	42	132,1	127,46	*78	16	35	*88	20	50	-	-	-
17050071	45	141,1	136,54	*78	16	35	*88	20	50	*88	20	60
17050072	46	144,2	139,58	*78	16	35	-	-	-	-	-	-
17050073	48	150,2	145,64	*78	16	35	*88	20	50	-	-	-
17050074	50	156,3	151,69	*78	20	35	*88	20	50	*88	20	60
17050075	55	171,4	166,85	*78	20	35	-	-	-	-	-	-
17050076	57	177,5	172,91	*78	20	35	*88	20	50	*88	25	60
17050077	60	186,6	181,99	*78	20	35	*88	20	50	*88	25	60
17050078	76	235,1	230,49	*78	20	35	*88	25	50	*88	25	60
17050079	95	292,7	288,08	*88	25	40	*108	25	50	*120	25	60

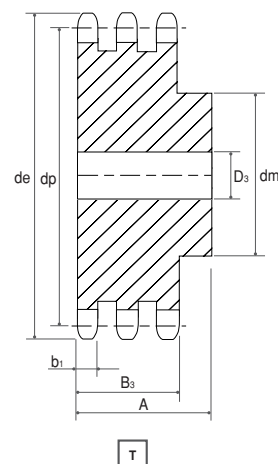
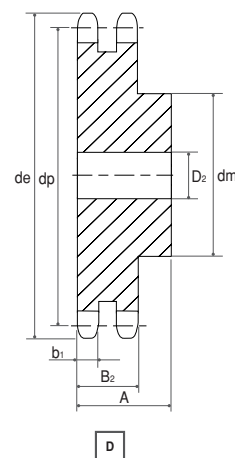
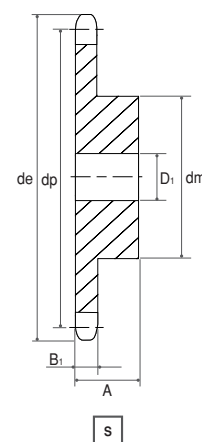
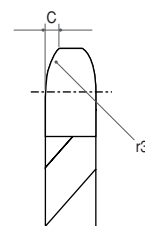
Para cadena de rodillos según DIN 8187 / Material C 43 / *Material C 45.

Piñón 1/2" x 5/16"

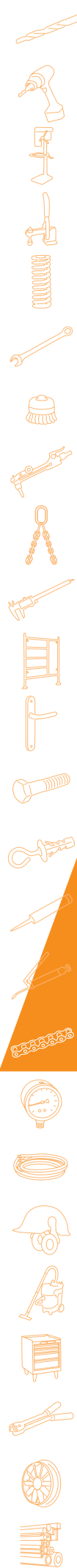
12,7 x 7,75 mm / 08B - 1 - 2 - 3

PIÑÓN (mm)						CADENA (mm)		
r3	C	B1	b1	B2	B3	Paso	Ancho interno	Ø Rodillo
13	1,3	7,2	7	21	34,9	12,7	7,75	8,51

Ref. catálogo	Z	de	dp	dm	S		D			T		
					D1	A	dm	D2	A	dm	D3	A
17050080	8	38,0	33,18	20	10	25	20	10	32	20	10	46
17050081	9	42,0	37,13	24	10	25	24	10	32	24	12	46
17050082	10	45,9	41,10	26	10	25	28	10	32	28	12	46
17050083	11	49,9	45,07	29	10	25	32	12	35	32	16	50
17050084	12	53,9	49,07	33	10	28	35	12	35	35	16	50
17050085	13	57,9	53,06	37	10	28	38	12	35	38	16	50
17050086	14	61,9	57,07	41	10	28	42	12	35	42	16	50
17050087	15	65,9	61,09	45	10	28	46	12	35	46	16	50
17050088	16	69,9	65,10	50	12	28	50	16	38	50	16	50
17050089	17	74,0	69,11	52	12	28	54	16	38	54	16	50
17050090	18	78,0	73,14	56	12	28	58	16	38	58	16	50
17050091	19	82,0	77,16	60	12	28	62	16	38	62	16	50
17050092	20	86,0	81,19	64	12	28	66	16	38	66	16	50
17050093	21	90,1	85,22	68	14	28	70	16	40	70	16	55
17050094	22	94,1	89,24	70	14	28	70	16	40	70	16	55
17050095	23	98,1	93,27	70	14	28	70	16	40	70	16	55
17050096	24	102,1	97,29	70	14	28	75	16	40	75	16	55
17050097	25	106,2	101,33	70	14	28	80	16	40	80	16	55
17050098	26	110,2	105,36	70	16	30	85	16	40	85	20	55
17050099	27	114,2	109,40	70	16	30	85	16	40	85	20	55
17050100	28	118,3	113,42	70	16	30	90	16	40	90	20	55
17050101	29	122,3	117,46	80	16	30	95	16	40	95	20	55
17050102	30	126,3	121,50	80	16	30	100	16	40	100	20	55
17050103	31	130,4	125,54	90	16	30	100	20	40	110	20	55
17050104	32	134,4	129,56	90	16	30	100	20	40	110	20	55
17050105	33	138,4	133,60	90	16	30	100	20	40	110	20	55
17050106	34	142,4	137,64	90	16	30	100	20	40	110	20	55
17050107	35	146,5	141,68	90	16	30	100	20	40	110	20	55
17050108	36	150,6	145,72	90	16	35	100	20	40	120	25	55
17050109	37	154,6	149,76	90	16	35	100	20	40	120	25	55
17050110	38	158,6	153,80	90	16	35	100	20	40	120	25	55
17050111	39	162,7	157,83	90	16	35	100	20	40	120	25	55
17050112	40	166,7	161,87	90	16	35	100	20	40	120	25	55
17050113	42	176,5	169,95	*88	20	42	*108	20	55	-	-	-
17050114	45	188,6	182,07	*88	20	42	*108	20	55	*120	25	68
17050115	46	192,6	186,10	*88	20	42	*108	20	55	-	-	-
17050116	48	200,7	194,18	*88	20	42	*108	20	55	-	-	-
17050117	50	208,8	202,26	*88	20	42	*108	20	55	*120	25	68
17050118	55	229,0	222,46	*88	20	42	-	-	-	-	-	-
17050119	57	237,1	230,54	*88	20	42	*108	25	55	*120	25	68
17050120	60	249,2	242,66	*88	20	42	*108	25	55	*120	25	68
17050121	76	313,9	307,33	*88	25	42	*108	25	55	*120	25	68
17050122	95	390,7	384,11	*108	25	42	*120	25	55	*136	25	68



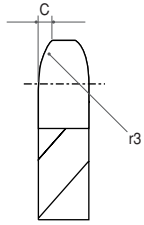
Para cadena de rodillos según DIN 8187 / Material C 43 / *Material Fe. Tipo construido con moyú soldado.



17/ TRANSMISIÓN

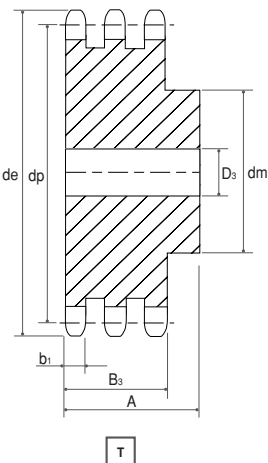
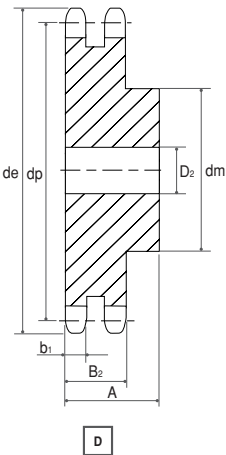
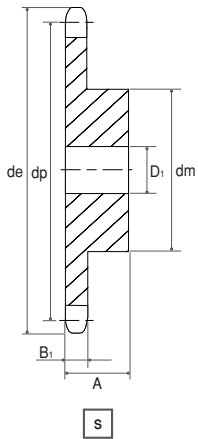
PIÑONES PARA CADENAS DE TRANSMISIÓN

Piñón 5/8" x 3/8"



15,875 x 9365 mm / 10B - 1 - 2 - 3

PIÑÓN (mm)						CADENA (mm)		
r3	C	B1	b1	B2	B3	Paso	Ancho interno	Ø Rodillo
16	1,6	9,1	9	25,5	42,1	15,875	9,65	10,16



Ref. catálogo	Z	de	dp	S			D			T		
				dm	D1	A	dm	D2	A	dm	D3	A
17050123	8	48,4	41,08	25	10	25	25	12	40	25	12	55
17050124	9	53,3	46,42	30	10	25	30	12	40	30	12	55
17050125	10	58,3	51,37	35	10	25	35	12	40	35	16	55
17050126	11	63,2	56,34	37	12	30	39	16	40	39	16	55
17050127	12	68,2	61,34	42	12	30	44	16	40	44	16	55
17050128	13	73,2	66,32	47	12	30	49	16	40	49	16	55
17050129	14	78,2	71,34	52	12	30	54	16	40	54	16	55
17050130	15	83,2	76,36	57	12	30	59	16	40	59	16	55
17050131	16	88,3	81,37	60	12	30	64	16	45	64	16	60
17050132	17	93,3	86,39	60	12	30	69	16	45	69	16	60
17050133	18	98,3	91,42	70	14	30	74	16	45	74	16	60
17050134	19	103,3	96,45	70	14	30	79	16	45	79	16	60
17050135	20	108,4	101,49	75	14	30	84	16	45	84	16	60
17050136	21	113,4	106,52	75	16	30	85	16	45	85	20	60
17050137	22	118,4	111,55	80	16	30	90	16	45	90	20	60
17050138	23	123,5	116,58	80	16	30	95	16	45	95	20	60
17050139	24	128,5	121,62	80	16	30	100	16	45	100	20	60
17050140	25	133,6	126,66	80	16	30	105	16	45	105	20	60
17050141	26	138,6	131,70	85	20	35	110	20	45	110	20	60
17050142	27	143,6	136,75	85	20	35	110	20	45	110	20	60
17050143	28	148,7	141,78	90	20	35	115	20	45	115	20	60
17050144	29	153,7	146,83	90	20	35	115	20	45	115	20	60
17050145	30	158,8	151,87	90	20	35	120	20	45	120	20	60
17050146	31	163,8	156,92	95	20	35	120	20	45	120	20	60
17050147	32	168,9	161,95	95	20	35	120	20	45	120	20	60
17050148	33	173,9	167,00	95	20	35	120	20	45	120	20	60
17050149	34	178,9	172,05	95	20	35	120	20	45	120	20	60
17050150	35	184,0	177,10	95	20	35	120	20	45	120	20	60
17050151	36	189,0	182,15	100	20	35	120	20	45	120	25	60
17050152	37	194,1	187,20	100	20	35	120	20	45	120	25	60
17050153	38	199,1	192,24	100	20	35	120	20	45	120	25	60
17050154	39	204,2	197,29	100	20	35	120	20	45	120	25	60
17050155	40	209,2	202,34	100	20	35	120	20	45	120	25	60
17050156	42	220,8	212,44	*108	20	43	*120	25	59	-	-	-
17050157	45	236,0	227,58	*108	20	43	*120	25	59	*136	25	74
17050158	46	241,0	236,63	*108	20	43	*120	25	59	-	-	-
17050159	48	251,1	242,73	*108	20	43	*120	25	59	-	-	-
17050160	50	261,2	252,82	*108	20	43	*120	25	59	*136	25	74
17050161	55	286,5	278,08	*108	20	43	-	-	-	-	-	-
17050162	57	296,6	288,18	*108	25	43	*120	25	59	*136	25	74
17050163	60	311,7	303,32	*108	25	43	*120	25	59	*136	25	74
17050164	76	392,5	384,16	*108	25	43	*120	25	59	*145	30	75
17050165	95	488,5	480,14	*118	30	59	*145	30	59	*145	30	75

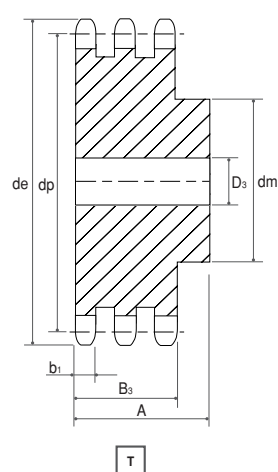
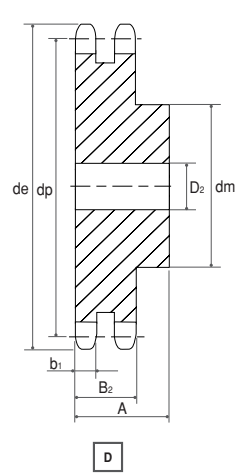
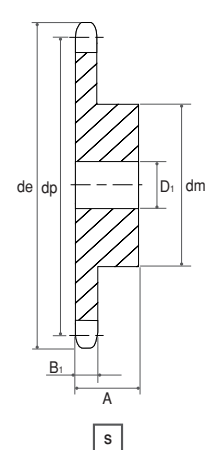
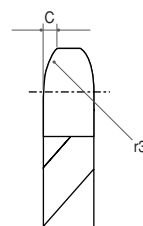
Para cadena de rodillos según DIN 8187 / Material C 43 / *Material Fe. Tipo construido con moyú soldado.

Piñón 3/4" x 7/16"

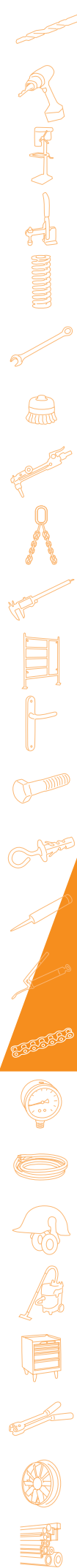
19,05 x 11,68 mm / 12B - 1 - 2 - 3

PIÑÓN (mm)						CADENA (mm)		
r3	C	B1	b1	B2	B3	Paso	Ancho interno	Ø Rodillo
19	2	11,1	10,8	30,3	49,8	19,05	11,68	12,07

Ref. catálogo	Z	de	dp	dm	S		D			T		
					D1	A	dm	D2	A	dm	D3	A
17050166	8	58,0	49,78	31	12	30	31	12	45	31	16	65
17050167	9	63,9	55,70	37	12	30	37	12	45	37	16	65
17050168	10	69,8	61,64	42	12	30	42	12	45	42	16	65
17050169	11	75,8	67,61	46	16	35	47	16	50	47	20	70
17050170	12	81,8	73,60	52	16	35	53	16	50	53	20	70
17050171	13	87,8	79,59	58	16	35	59	16	50	59	20	70
17050172	14	93,8	85,61	64	16	35	65	16	50	65	20	70
17050173	15	99,8	91,63	70	16	35	71	16	50	71	20	70
17050174	16	105,8	97,65	75	16	35	77	20	50	77	20	70
17050175	17	111,9	103,67	80	16	35	83	20	50	83	20	70
17050176	18	117,9	109,71	80	16	35	89	20	50	89	20	70
17050177	19	123,9	115,75	80	16	35	95	20	50	95	20	70
17050178	20	130,0	121,78	80	16	35	100	20	50	100	20	70
17050179	21	136,0	127,82	90	20	40	100	20	50	100	20	70
17050180	22	142,0	133,86	90	20	40	100	20	50	100	20	70
17050181	23	148,1	139,90	90	20	40	110	20	50	110	20	70
17050182	24	154,1	145,94	90	20	40	110	20	50	110	20	70
17050183	25	160,2	152,00	90	20	40	120	20	50	120	20	70
17050184	26	166,2	158,04	95	20	40	120	20	50	120	20	70
17050185	27	172,3	164,09	95	20	40	120	20	50	120	20	70
17050186	28	178,3	170,13	95	20	40	120	20	50	120	20	70
17050187	29	184,4	176,19	95	20	40	120	20	50	120	20	70
17050188	30	190,4	182,25	95	20	40	120	20	50	120	20	70
17050189	31	196,5	188,31	95	20	40	120	20	50	130	25	70
17050190	32	202,5	194,35	95	20	40	120	20	50	130	25	70
17050191	33	208,6	200,40	95	20	40	120	20	50	130	25	70
17050192	34	214,6	206,46	95	20	40	120	20	50	130	25	70
17050193	35	220,7	212,52	95	20	40	120	20	50	130	25	70
17050194	36	226,8	218,58	100	20	40	120	25	50	130	25	70
17050195	37	232,8	224,64	100	20	40	120	25	50	130	25	70
17050196	38	238,9	230,69	100	20	40	120	25	50	130	25	70
17050197	39	244,9	236,75	100	20	40	120	25	50	130	25	70
17050198	40	251,0	242,81	100	20	40	120	25	50	130	25	70
17050199	42	265,0	254,93	*118	25	61	*136	25	62	-	-	-
17050200	45	283,2	273,10	*118	25	61	*136	25	62	*140	25	72
17050201	46	289,2	279,16	*118	25	61	*136	25	62	-	-	-
17050202	48	301,4	291,27	*118	25	61	*136	25	62	-	-	-
17050203	50	313,5	303,39	*118	25	61	*136	25	62	*140	25	72
17050204	55	343,8	333,70	*118	25	61	-	-	-	-	-	-
17050205	57	355,9	345,81	*118	25	61	*136	25	62	*140	30	75
17050206	60	374,1	363,99	*118	25	61	*136	25	62	*140	30	75
17050207	76	471,1	460,99	*118	30	61	*145	30	63	*150	30	75
17050208	95	586,2	576,17	*133	30	62	*145	30	63	*150	30	75



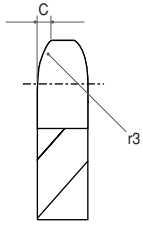
Para cadena de rodillos según DIN 8187 / Material C 43 / *Material Fe. Tipo construido con moyú soldado.



17/ TRANSMISIÓN

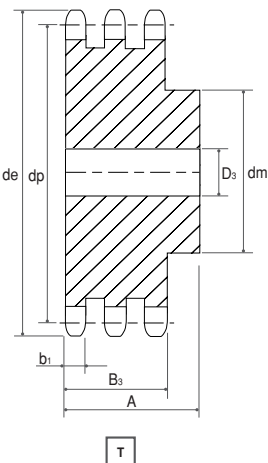
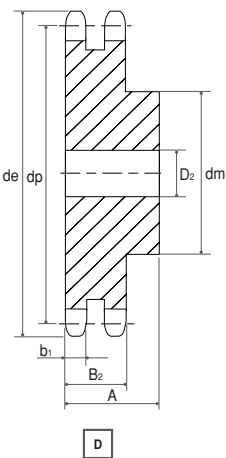
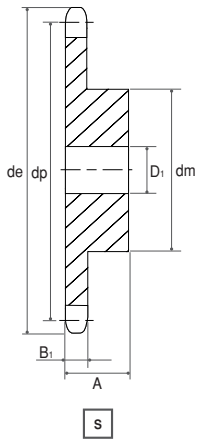
PIÑONES PARA CADENAS DE TRANSMISIÓN / ENGRANAJES

Piñón 1" x 17,02 mm



25,4 x 17,02 mm / 16B - 1 - 2 - 3

r3	PIÑÓN (mm)					CADENA (mm)		
	C	B1	b1	B2	B3	Paso	Ancho interno	Ø Rodillo
26	2,5	16,2	15,8	47,7	79,6	25,4	17,02	15,88



Ref. catálogo	Z	de	dp	S			D			T		
				dm	D1	A	dm	D2	A	dm	D3	A
17050209	8	77,9	66,37	42	16	35	42	20	65	42	20	95
17050210	9	85,8	74,27	50	16	35	50	20	65	50	20	95
17050211	10	93,8	82,19	55	16	35	56	20	65	56	20	95
17050212	11	101,7	90,14	61	16	40	64	20	70	64	25	100
17050213	12	109,7	98,14	69	16	40	72	20	70	72	25	100
17050214	13	117,7	106,12	78	16	40	80	20	70	80	25	100
17050215	14	125,7	114,15	84	16	40	88	20	70	88	25	100
17050216	15	133,7	122,17	92	16	40	96	20	70	96	25	100
17050217	16	141,8	130,20	100	20	45	104	20	70	104	25	100
17050218	17	149,8	138,22	100	20	45	112	20	70	112	25	100
17050219	18	157,8	146,28	100	20	45	120	20	70	120	25	100
17050220	19	165,9	154,33	100	20	45	128	20	70	128	25	100
17050221	20	173,9	162,38	100	20	45	130	20	70	130	25	100
17050222	21	182,0	170,43	110	20	50	130	25	70	130	25	100
17050223	22	190,1	178,48	110	20	50	130	25	70	130	25	100
17050224	23	198,1	186,53	110	20	50	130	25	70	130	25	100
17050225	24	206,2	194,59	110	20	50	130	25	70	130	25	100
17050226	25	214,2	202,66	110	20	50	130	25	70	130	25	100
17050227	26	222,3	210,72	120	20	50	130	25	70	130	30	100
17050228	27	230,4	218,79	120	20	50	130	25	70	130	30	100
17050229	28	238,4	226,85	120	20	50	130	25	70	130	30	100
17050230	29	246,5	234,92	120	20	50	130	25	70	130	30	100
17050231	30	254,6	243,00	120	20	50	130	25	70	130	30	100
17050232	31	262,6	251,08	120	25	50	140	25	70	140	30	100
17050233	32	270,7	259,13	120	25	50	140	25	70	140	30	100
17050234	33	278,8	267,21	120	25	50	140	25	70	140	30	100
17050235	34	286,9	275,28	120	25	50	140	25	70	140	30	100
17050236	35	294,9	283,36	120	25	50	140	25	70	140	30	100
17050237	36	303,0	291,44	120	25	50	140	25	70	140	30	100
17050238	37	311,1	299,51	120	25	50	140	25	70	-	-	-
17050239	38	319,2	307,59	120	25	50	140	25	70	140	30	100
17050240	39	327,2	315,67	120	25	50	140	25	70	-	-	-
17050241	40	335,3	323,73	120	25	50	140	25	70	140	30	100
17050242	42	353,7	339,90	*133	25	68	*140	25	70	-	-	-
17050243	45	377,9	364,12	*133	25	68	*140	25	70	*160	30	110
17050244	46	386,0	372,21	*133	25	68	*140	25	70	-	-	-
17050245	48	402,1	388,36	*133	25	68	*140	25	70	-	-	-
17050246	50	418,3	404,52	*133	25	68	*140	25	70	*160	30	110
17050247	57	474,9	461,07	*133	30	68	*160	40	82	*180	40	112
17050248	60	499,1	485,32	*133	30	68	*160	40	82	-	-	-
17050249	76	628,4	614,65	*145	30	68	*160	40	82	*180	40	112
17050250	95	782,0	768,22	*160	30	78	*180	40	109	*180	40	112

Para cadena de rodillos según DIN 8187 / Material C 43 / *Material Fe. Tipo construido con moyú soldado.