



LANZAS FLEXIBLES PARA TALADRINA

Lanzas Loc-Line

MODELO 1/4" - 6 mm

| | Ref. catálogo | Código | Incluye |
|---|---------------|--------|--|
|  | 04100001 | 40.413 | 20 rótulas articuladas |
|  | | | 3 bocas de salida: 1,60 - 3,17 - 6,35 mm |
|  | | | 2 racord: 1/4 - 1/8 largo total: 330 mm |
|  | 04100002 | 41.401 | 20 rótulas articuladas 300 mm |
|  | 04100003 | 41.407 | Boca de salida plana 24 x 0,8 (2 uds.) |
|  | 04100004 | 21.192 | Grifo macho 1/4 NPT (2 uds.) |
|  | 04100005 | 21.193 | Grifo hembra 1/4 NPT (2 uds.) |
|  | 04100006 | 21.194 | Grifo en línea (2 uds.) |
|  | 04100007 | 41.405 | Racord de 1/8 NPT (4 uds.) |
|  | 04100008 | 41.406 | Racord de 1/4 NPT (4 uds.) |
|  | 04100009 | 41.402 | Boca de salida Ø 1,60 (4 uds.) |
|  | 04100010 | 41.403 | Boca de salida Ø 3,17 (4 uds.) |
|  | 04100011 | 41.404 | Boca de salida Ø 6,35 (4 uds.) |
|  | 04100012 | 78.001 | Pinza de montaje de 1/4 |

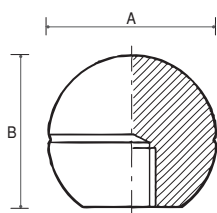
MODELO 1/2" - 12 mm

| | Ref. catálogo | Código | Incluye |
|---|---------------|--------|---|
|  | 04100013 | 50.813 | 12 rótulas articuladas |
|  | | | 3 bocas de salida: 9,30 - 12,70 - 6,35 mm |
|  | | | 2 racord: 3/8 y 1/2 largo total: 330 mm |
|  | 04100014 | 51.801 | 12 rótulas largo 270 mm |
|  | 04100015 | 51.806 | Boca de salida Ø 6,35 (4 uds.) |
|  | 04100016 | 51.802 | Boca de salida Ø 9,30 (4 uds.) |
|  | 04100017 | 51.803 | Boca de salida Ø 12,70 (4 uds.) |
|  | 04100018 | 51.807 | Boca plana 32 x 4,50 (2 uds.) |
|  | 04100019 | 51.804 | Racord 1/2 NPT (4 uds.) |
|  | 04100020 | 51.805 | Racord 1/2 NPT (4 uds.) |
|  | 04100021 | 32.092 | Grifo macho de 1/2 NPT (2 uds.) |
|  | 04100022 | 32.093 | Grifo hembra de 1/2 NPT (2 uds.) |
|  | 04100023 | 32.094 | Grifo en línea (2 uds.) |
|  | 04100024 | 78.002 | Pinza de montaje de 1/2 |

POMOS Y TIRADORES

1. Esfera Lisa.

Con Inserto Metálico

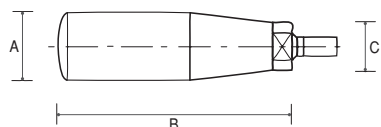


DUROPLASTO ACABADO BRILLANTE

| Ref. catálogo | Código | Medida | A | B |
|---------------|---------|--------|----|----|
| 04110001 | R351-6 | M6 | 25 | 23 |
| 04110002 | R351-8 | M8 | 25 | 23 |
| 04110003 | R352-6 | M6 | 32 | 30 |
| 04110004 | R352-8 | M8 | 32 | 30 |
| 04110005 | R352-10 | M10 | 32 | 30 |
| 04110006 | R353-8 | M8 | 38 | 36 |

| Ref. catálogo | Código | Medida | A | B |
|---------------|---------|--------|----|----|
| 04110007 | R353-10 | M10 | 38 | 36 |
| 04110008 | R354-10 | M10 | 44 | 43 |
| 04110009 | R354-12 | M12 | 44 | 43 |
| 04110010 | R355-12 | M12 | 51 | 49 |
| 04110011 | R355-16 | M16 | 51 | 49 |

2. Manilla Giratoria Macho.



TERMOPLÁSTICO ACABADO MATE

| Ref. catálogo | Código | Medida | A | B | C |
|---------------|--------------|--------|----|----|----|
| 04110025 | R3155M-6-12 | M6x12 | 20 | 55 | 12 |
| 04110026 | R3167M-8-15 | M8x15 | 23 | 67 | 18 |
| 04110027 | R3177M-8-15 | M8x15 | 25 | 77 | 18 |
| 04110028 | R3177M-10-15 | M10x15 | 25 | 77 | 18 |
| 04110029 | R3187M-10-15 | M10x15 | 27 | 87 | 20 |
| 04110030 | R3187M-12-15 | M12x15 | 27 | 87 | 20 |
| 04110031 | R3197M-10-15 | M10x15 | 29 | 97 | 20 |
| 04110032 | R3197M-12-15 | M12x15 | 29 | 97 | 20 |